

An easy way to fast & reliable sugar analyses

All manufacturers in the pharmaceutical industry use sugars or sugar derivatives as raw materials in the production of tablets, capsules and oral liquids.

When analysing sugar raw materials according to the compendia monographies (USP and Ph.Eur.) the analyses for related substances and assay share some important similarities.

For many of the methods the use of cation-exchange resin columns as the stationary phase is essential for the HPLC analysis. Furthermore a refractometer is used for the detection of the sugar derivatives.

For most of the monographies a large number of related substances are described. As a lot of these substances are chemically very closely related it can be a challenging task to obtain acceptable separation. This fact can lead to risk of re-runs or extensive optimization of the HPLC system as well as the analytical column.

At Eurofins Pharma A/S we have over a number of years built up extensive expertise in sugar analyses according to Ph.Eur. and USP, as well as a number of client specific methods. We can help you in setting up new and specific methods or ensuring reliable, high quality and fast analyses of sugar raw materials according to the monographies.

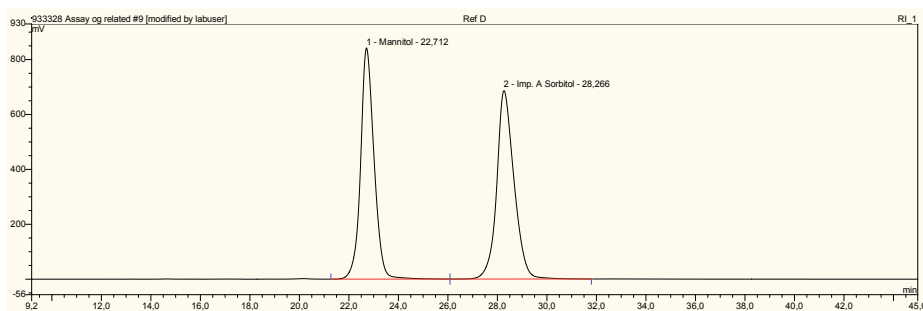
A list of a number of the relevant sugar monography numbers is shown on page 2.

... continued



Title

Erythritol 01/2009:1803
Isomalt 01/2008:1531
myo-Inositol 01/2008:1805
Lactulose 01/2009:1230
Lactulose liquid 01/2009:0924
Maltitol 01/2009:1235
Maltitol liquid 01/2008:1236
Mannitol 04/2009:0559
Sorbitol 04/2009:0435



Example of a chromatogram from a mannitol analysis

Please contact Eurofins Pharma if you are interested to analyse your sugar raw materials in a fast and reliable manner.

With kind regards,
Eurofins Pharma A/S

Planned Eurofins newsletters

- Eurofins introduces pre-clinical and clinical services from eight European sites
- Cleaning validation of production lines
- Expanded services for stability trials
- New opportunities for microbiological identifications with Eurofins (Microseq)